



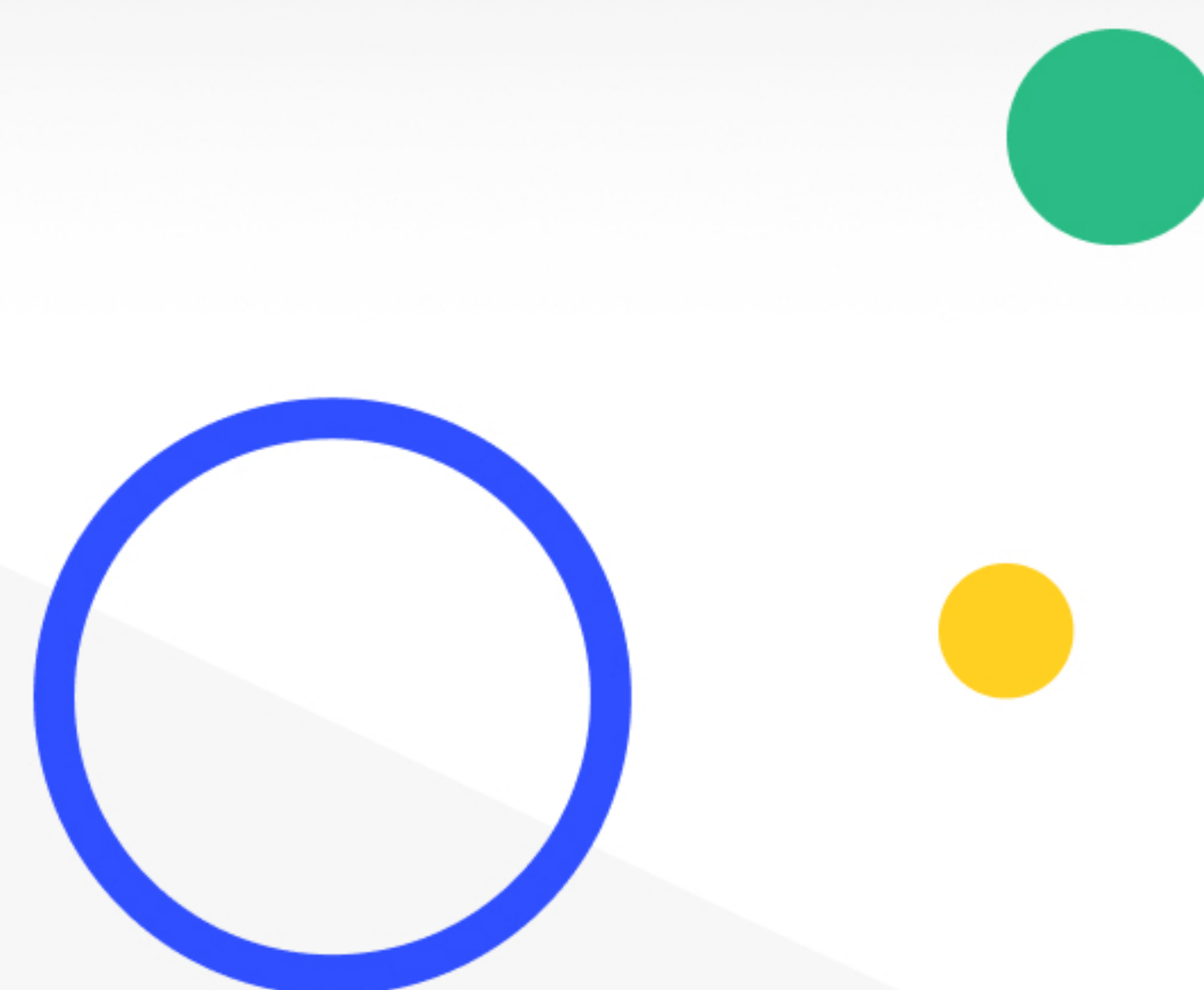
Secure All Data. From Production to AI.

Comprehensive, agentless, and uniform Data Security Platform. Mitigate risks and maintain compliance without slowing down your business.

Wealthsimple

"You need to make secure data the fastest way of getting things done and that's what we do with Satori."

Dr. Diederik Van Liere CTO, Wealthsimple

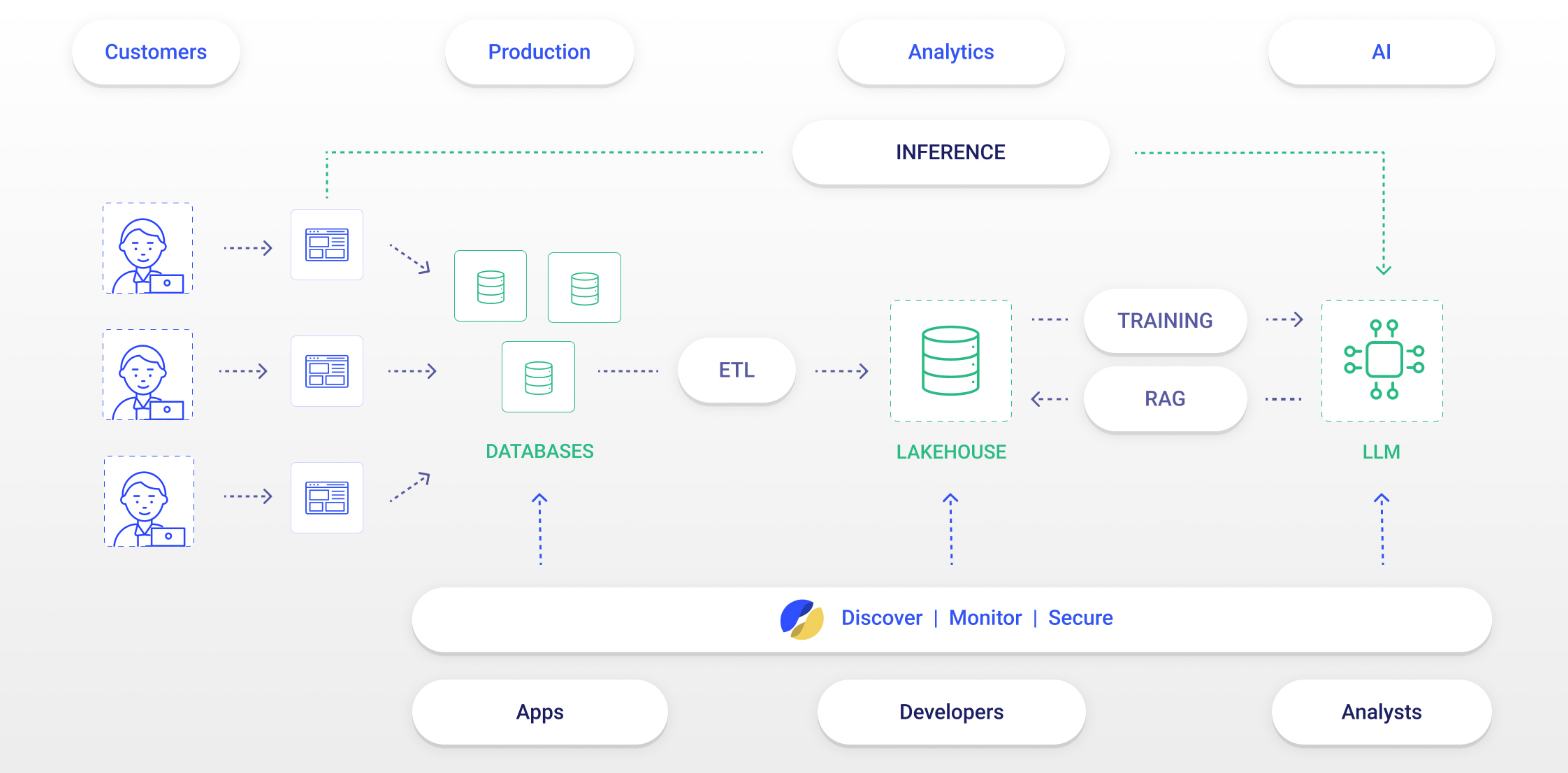


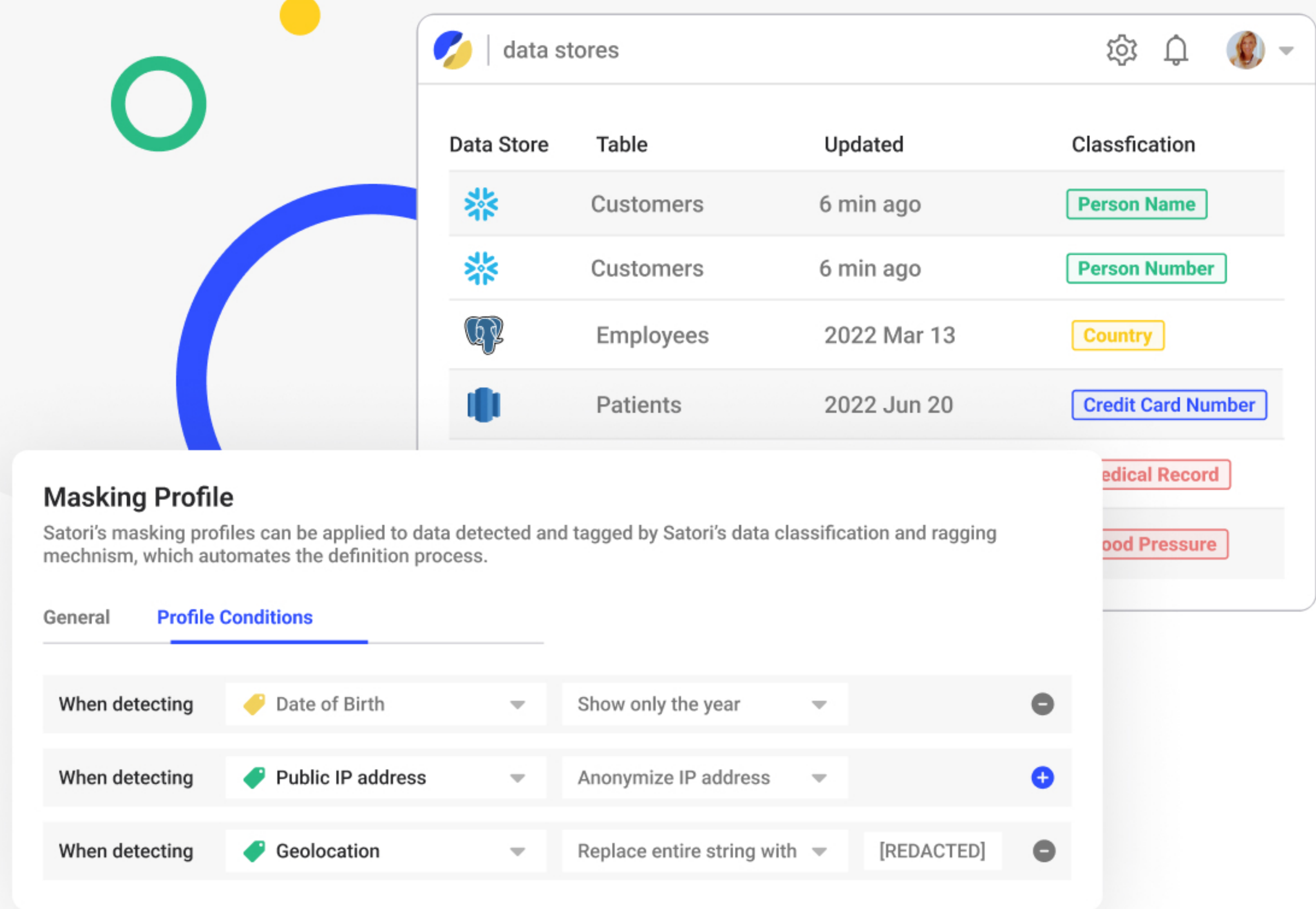
Data security has never been so challenging. According to the IBM 2024 Data Breach Report, customer data is involved in 43% of breaches. Yet, traditional approaches—mapping data, identifying risks, and implementing controls—are too slow and static for today’s dynamic environments. This leaves security teams with incomplete visibility and limited control.

Modern data flows span multiple environments, clouds, data stores, and teams. Legacy methods can’t scale to handle the constant change in permissions, tools, and datasets, forcing teams to choose between blocking access or risking a breach.

Satori addresses the challenges of protecting customer data in today’s hybrid and dynamic data environments by combining unparalleled data discovery and monitoring capabilities with real-time and granular controls.

With Satori, your data security posture adjusts itself dynamically to changes in the data landscape with robust controls and capabilities to eliminate risks in real-time while enabling secure and easy access to data for the organization.



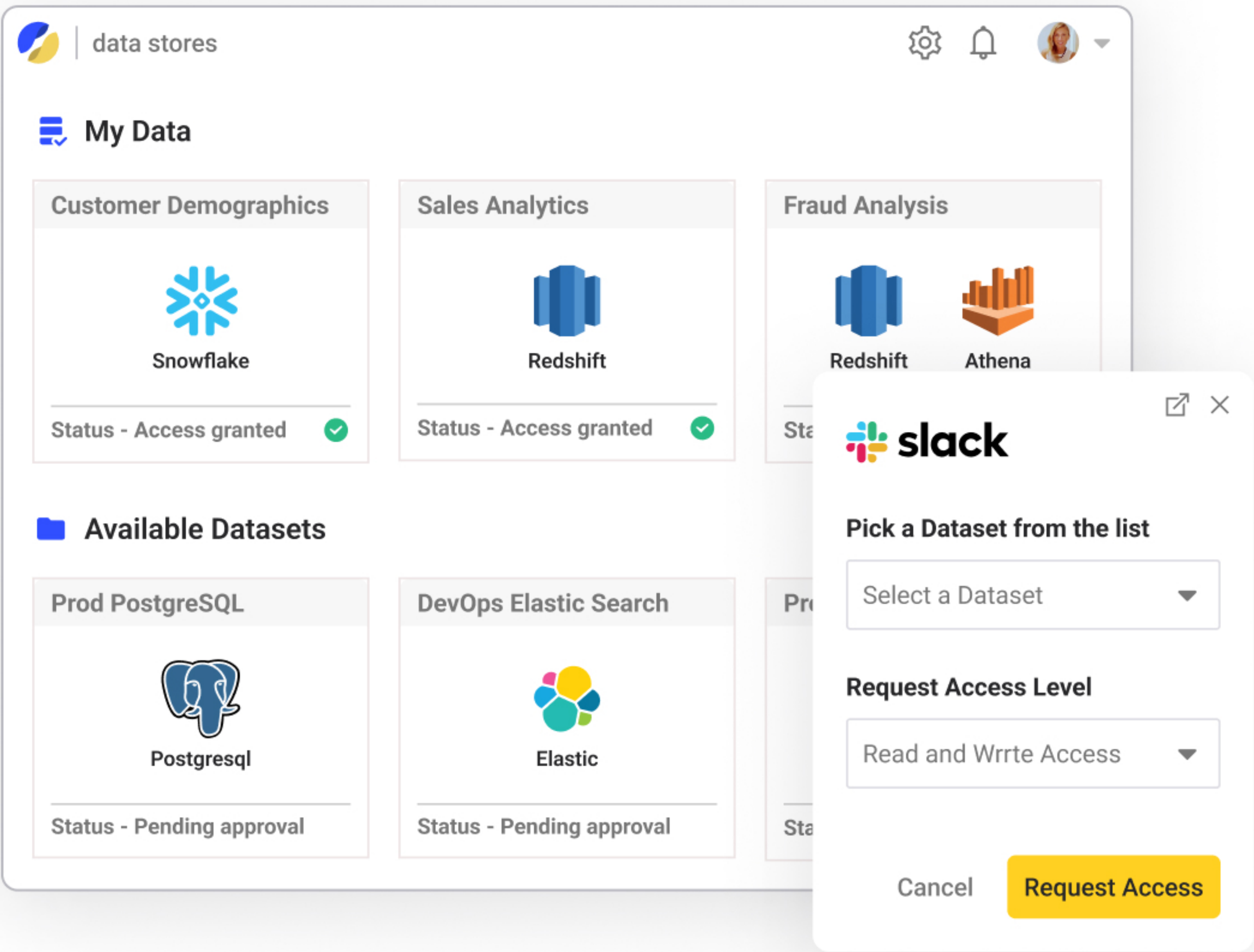
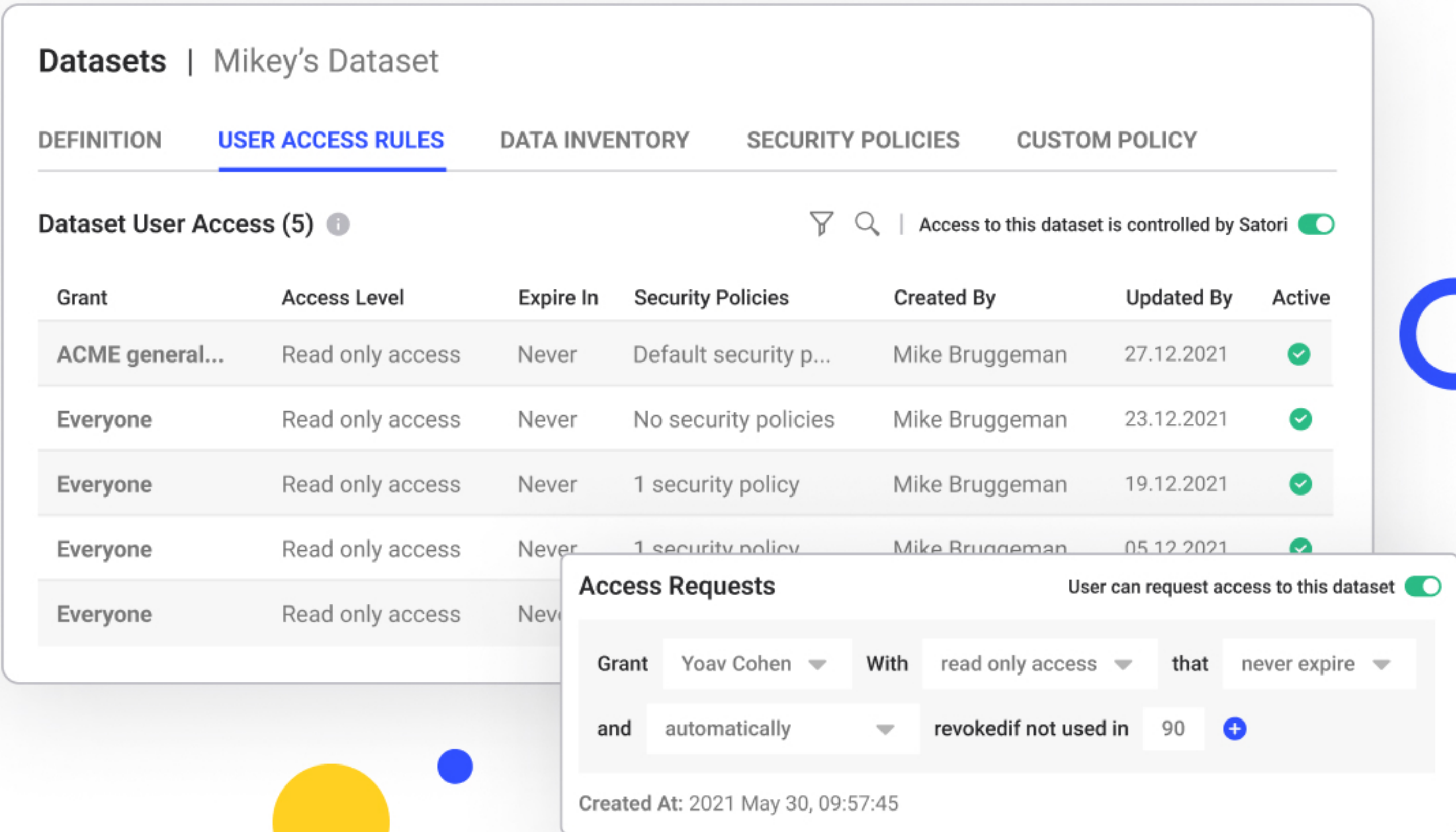


Actionable Visibility and Real-Time Controls

Knowing where your data is and who's accessing it is just the starting point. To protect dynamic environments, you need real-time enforcement that adapts instantly to evolving roles, use cases, and data flows. Whether it's an HR report or an AI model, your controls must operate at the speed of your data.

Dynamic, Adaptive Security

Static security frameworks can't keep up with today's rapidly changing environments. Modern solutions must adapt automatically to role changes, new datasets, and evolving use cases—eliminating the need for constant manual updates and ensuring continuous protection without disruption.



Automation at Scale

Manual processes can't match the demands of modern data security. Automating routine tasks—such as monitoring data flows, enforcing policies, and flagging anomalies—is essential to keeping up with growth and reducing operational pressure on your security team.

Key Capabilities:

- ✓ **Centralized data access control:** Implement RBAC & ABAC on all your databases, data warehouses and data lakes.
- ✓ **Continuous data discovery & classification:** Discover unknown data assets, and continuously classify your data.
- ✓ **Data access governance:** Gain complete visibility to your data access, from production to AI.
- ✓ **Data activity monitoring:** Multi-cloud and multi-data store DAM.
- ✓ **Real-time enforcement:** Apply security policies dynamically across your data stack from one platform.



"We were able to deploy Satori in a few weeks because it doesn't require making any changes in existing data flows".

Arun K. Buduri VP Engineering, IT & CISO, Innovaccer

Learn more: satoricyber.com

Set an intro meeting:

